

# **TFT TIGER PRODUCT CATALOGUE**

World class dewatering solutions.

# WHO WE ARE



Trivikram Flowtech (TFT) is the ultimate destination, where we provide fluid solutions for a wide range of industries. Our areas of expertise include designing & manufacturing high performance pumps, application engineering, R&D, selection of pumps and much more. We offer an extensive range of

positive displacement and centrifugal pumps favouring the commercial markets. Our products are of premium quality, reliable and robust for usage in industrial, domestic and agricultural markets. Our pumps are synonymous to providing leading performance and high efficiency.

## Our front-line pumping services include:

- Pump selection and field study
- Commissioning and installation
- After-sales service
- Technical seminars
- Rental services



**SYNONYMOUS TO PROVIDING  
LEADING PERFORMANCE AND  
HIGH EFFICIENCY.**

# WHY YOU SHOULD CHOOSE US

We are a team of self made experts with an exceptional 25 years experience. We believe that right product & right knowledge, combined together help the business grow. With TFT's positive approach & decades of experience + expertise, we are confident enough to back you up.

We are always upgrading & responding to the needs of the business. We redefine your business in every aspect.

Here is our multi-pronged approach which has helped us serve our customers effectively:



### PERSONALISED METHODOLOGY:

Our solutions for you are tailor made. Your business is one of a kind, so are our services for you. A lot of objective understanding is what goes in here.



### EXCEPTIONAL QUALITY:

We add real value to your business. Our team evaluate your needs according to your business activities at every stage & present you the end result.



### COMPLETE TRANSPARENCY:

Our communication with you is the real deal. We make sure you're part of every process to know how we're progressing and also be well informed.



### 24/7 CUSTOMER SUPPORT:

Our utmost priority is customer satisfaction and providing timely assistance is central to our philosophy. Reach out to us anytime.

# TFT TIGER SERIES



TFT Tiger Dewatering Pumps are manufactured to be reliable, mobile and to produce tremendous performance. Mainly used in general purpose industry for Construction, Utilities and Civil Engineering, TFT tiger is your best bet for safer and consistent performance. Simply said, TFT tiger pumps are easy to use, easier to maintain.

## SPECIFICATIONS

### SIZE DETAILS

- **Weight (kg):**  
1049 kgs\* without fuel /  
1179 kgs\* with fuel

- **Dimensions (mm):**  
2002 x 1322 x 1478

### PERFORMANCE

- **Max Head:**  
34 metres

- **Max Discharge :**  
320 m<sup>3</sup> per hour

### FUEL

- **Tank Capacity:**  
130 ltrs

### PUMP MATERIALS

- **Main Pump Casing :**  
Cast Iron

- **Impeller/Stuffing Box:**  
SS316

- **Shaft:**  
SS 304

### PUMP CONNECTIONS

- **Pump Suction Size :**  
6"

- **Pump Discharge Size:**  
6"

- **Miller Couplings:**  
Optional

### CHASSIS

4-wheel site trailer / 2-wheel heavy trailer / skid mounted / sound attenuated enclosure (optional)

### PRIME SYSTEM

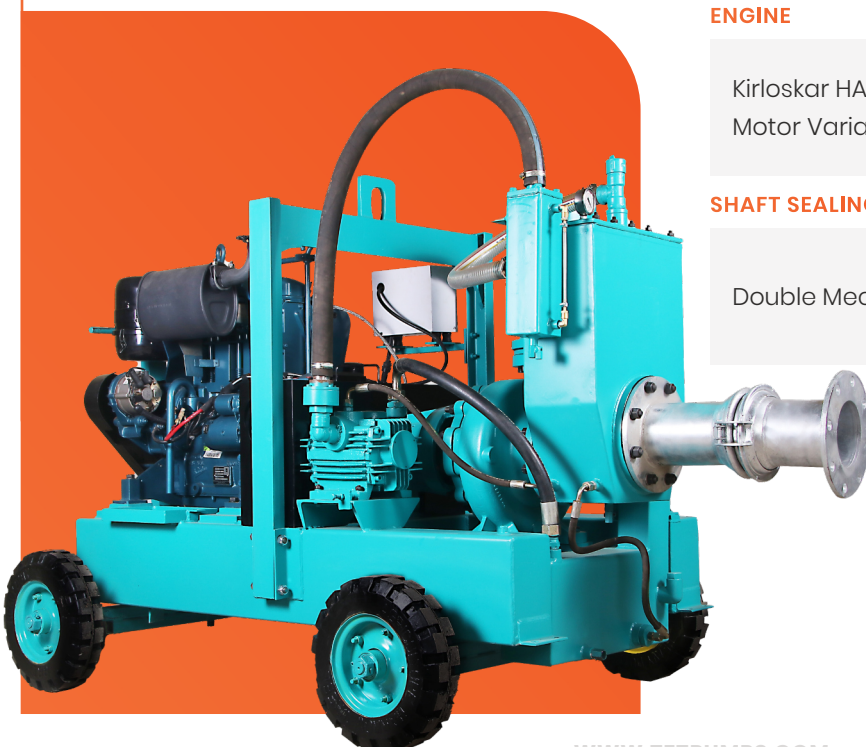
Oil Lubricated Rotary Vacuum Pump / Nominal Displacement 60cfm / Non-Return Valve

### ENGINE

Kirloskar HA394 Air Cooled Diesel Engine (Electric Motor Variant Also Available)

### SHAFT SEALING

Double Mechanical Seal with Oil Immersion



# FEATURES



With vacuum assist, TWP 6" can automatically prime to 28ft (8.5m) of suction lift.



With a 24-hour fuel tank capacity, TWP 6" can run overnight without the need to refuel which in turn gives you a saving in labour costs.



Balanced lifting = easy onsite installation. With a single lifting point, it is easy to move TWP6" pumps around sites with standard construction equipment. Simple to install, regardless of the environment, you can have your pumps up and running quickly.



Variable speed operations enable you to change gears in the pump's performance as per requirements. Our pumps are flexible and let you prioritize on performance or energy / fuel savings by matching the engine speed to each different task.



Dry-running is possible with our TWP6" Oil immersed dual mechanical seal design. Auto-priming, dry running and portability make the TWP6" the perfect choice for dewatering, sewage bypass, and water transfer applications.



Different applications require different materials of construction, where greater resistance is needed against corrosion, erosion, and abrasion. Thus, we offer our pumps in a variety of other metals such as Bronze, Hard Iron and High chrome.



## APPLICATIONS



Clear & Dirty Water



Over Pumping



Site Dewatering

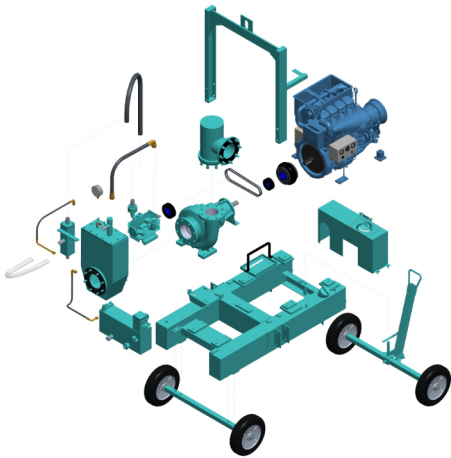


Waste Water



Quarries



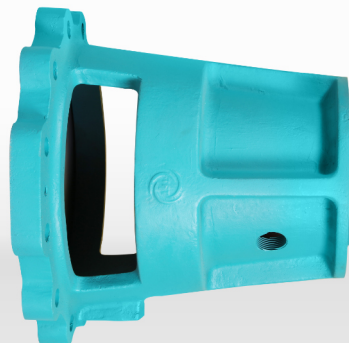


*To ensure minimal downtime and keep the pump up and running we make sure all necessary spare parts are readily available at our factory.*

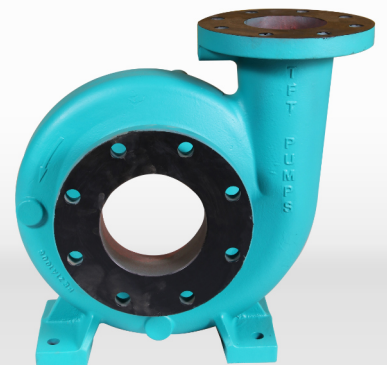
## LIST OF SPARE PARTS FOR DEWATERING PUMP (TFT TIGER SERIES)



Bearing



Bearing Housing



Casing



Tyres for Coupling

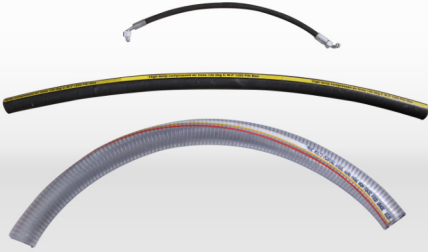


Couplings

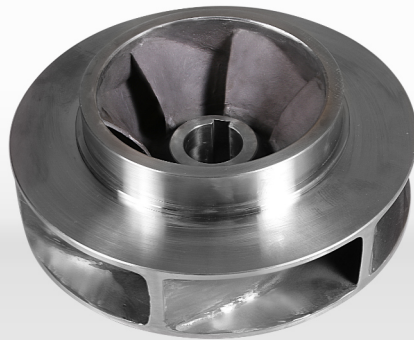


Float

# LIST OF SPARE PARTS FOR DEWATERING PUMP (TFT TIGER SERIES)



Hoses



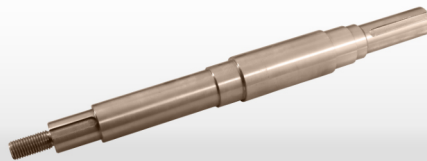
Impeller



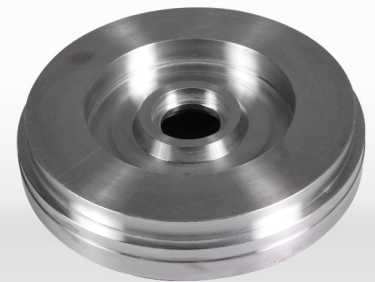
Double Mechanical Seal



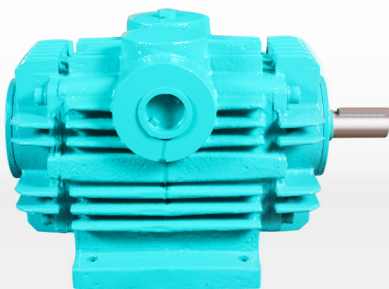
Discharge Ball



Shaft



Stuffing Box



Vacuum Pump



Miller Couplings



Vacuum Blade

# Accessible, Where ever You Are.

TFT Pumps Now Exporting Worldwide.

## GET IN TOUCH WITH US:

### HEAD OFFICE:

📍 21, Indira Nagar, Gopalasamy Colony, KNG Pudhur Pirivu, Thadagam road,  
Coimbatore, TN - 641025

☎ 9943049621 | 9843049621

@ sales@tftpumps.com  
exports@tftpumps.com

### FACTORY:

📍 57, Venkateswara colony, Thadagam road,  
Edayarpalayam, Coimbatore, TN - 641025